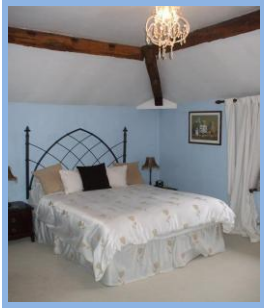


ACCOMMODATION

AA ★★★★★ Restaurant with Rooms

All rooms are individually furnished with rich fabrics, plump duvets & cotton bed linen. All are non-smoking and have ensuite facilities, double glazing, hairdryer, radio/alarm, extensive LCD TV with Freeview & DVD/CD Player, Tub Range toiletries, hot beverage tray, free WiFi



"Wollerton"

~ decorated with contemporary pale blue, cream & chocolate brown, offers a 5' wide bed with Gothic iron headboard and a shower ensuite. (Top 2nd floor)



"Ironbridge"

has a 4'6" wide double bed with a Gothic iron headboard & shower en suite.....overlooking the garden (1st floor)



"Whitchurch"

~ navy & gold furnishings, offering twin 3' wide beds & a shower en suite. Can be made up as a king size double for stays of 2+ nights. (1st floor)



"Hodnet"

is furnished in a cream & charcoal colour scheme, with a very spacious 6' wide king size bed and a shower en suite (1st floor)



"Shrewsbury"

~ with Laura Ashley Wilton wallpaper in Duck Egg/ Gold, has a 5' wide solid pine, queen size bed with matching furniture & offers an en suite bath/shower (1st floor)



Spacious "Hawkstone"

offers a 5'6" wide bed and a shower en suite with Cath Kidston designed fabrics (1st floor)

NB There are two steps down to the WC in Hawkstone

ACCOMMODATION TARIFF

Rates vary dependent on length of stay & time of year, but as an indication.....

From **£32.50** to **£45.00** per person per night, including Full English Breakfast (based on 2 sharing)

Supplements apply for Single Occupancy of Twin/Double Rooms

See www.ternhillfarm.co.uk for specific rates

We require Credit Card details to secure your reservation & final payment may be made at the end of your stay by Cash, Debit Card or Credit Card. Cancellations made within 14 days of the booked arrival date will be charged in full.

A 2% CHARGE will be applied to CREDIT CARD transactions NB. Irons are NOT permitted in the bedrooms, although facilities are available on request. We do not accept pets.

BREAKFAST ~ The Dining Room

"Aga-cooked" Full English Breakfast is served in the elegant "Dining Room". Alternatively, why not start your day with Smoked Salmon & Scrambled Eggs or a Continental Breakfast ~ with hot croissants and homemade Orange & Whisky Marmalade.



DINNER ~ The Cottage Restaurant (Tues-Sat)

We offer a choice from an innovative "A la carte" Menu, using locally sourced produce wherever possible ~ please ensure you reserve a table well in advance. Most of our dishes are cooked to order, and to ensure availability of your choice we recommend that you pre-order. A selection of soft/alcoholic beverages are available from the dispense-bar to accompany your dinner. We can cater for most dietary requirements - please advise us when making a reservation.



CHECK-IN & PARKING

Check-in is normally after 2pm & guests are respectfully requested to vacate their rooms by 10am on the day of departure, unless previous arrangements have been made. There is ample off road parking at back of the house, including some under-cover.

PLEASE FOLLOW SIGNAGE ON ARRIVAL and park in numbered bays

TERNHILL FARM HOUSE

A wonderful blend of character oak beams & floors with more contemporary luxuries. The individually furnished spacious rooms, named after places of interest in the area, are complemented by innovative fresh food cooked to order by the chef/proprietor – all in a non-smoking environment.

Originally part of a working farm the house was separated approx 14 years ago. We purchased it in January 2002 and undertook a complete renovation of all the rooms.

Having previously run a renowned restaurant with rooms in Middle Wallop, Hampshire, a similar combination of fresh food & luxurious accommodation has been applied to Ternhill Farm House.

THE LOCALITY

Conveniently situated on the crossroads of the A41 & A53 in North Shropshire, Ternhill Farm House is the perfect base for visiting Shrewsbury, Telford Ironbridge, Chester & The Potteries, or as a stop-over on route to Wales.

For those interested in leisure pursuits North Shropshire offers shooting at nearby Hodnet, fishing, golf, horse riding or walking.

There are numerous gardens to visit in the area, including Wollerton, Hodnet Hall (limited opening), Hawkstone Park & Follies, Stapeley Water Gardens, Dorothy Clive & Trentham Gardens (near Stoke-on-Trent).....plus the National Trust properties.

The Shropshire Union Canal runs through Market Drayton & Whitchurch and then, at Ellesmere, it separates into the Llangollen Branch & the Montgomery Canal.

Shropshire Tourism or North Shropshire Tourism can also assist with information regarding specific events which are taking place during your stay.

Ternhill Farm House

and
The Cottage Restaurant



A warm welcome awaits you at this Grade II Listed Georgian Farmhouse set in an acre of gardens on the crossroads of the A41 & A53

ALL ROOMS FEATURE: ~ EN SUITE FACILITIES
~ DOUBLE GLAZING ~ TROUSER PRESS
~ RADIO/ALARM ~ DVD/CD PLAYER
~ FLATSCREEN TV WITH FREEVIEW
~ FREE WiFi ~ NON-SMOKING
~ WIDE RANGE TEA/COFFEE/REFRESHMENTS
~ THE TUB RANGE TOILETRIES ~ HAIRDRYER
~ INDIVIDUALLY FURNISHED WITH RICH FABRICS,
PLUMP DUVETS & COTTON BED LINEN.
IRONING FACILITIES AVAILABLE ON REQUEST.

Prices range from:

£32.50 TO £45 PER PERSON PER NIGHT
including Full English Breakfast

(based on 2 people sharing a room)

SUPPLEMENTS APPLY FOR SINGLE OCCUPANCY
Book ONLINE at www.ternhillfarm.co.uk

Ternhill Farm House, Ternhill
Market Drayton, Shropshire TF9 3PX
Tel: 01630 638984 Fax: 01630 638752

www.ternhillfarm.co.uk

email: info@ternhillfarm.co.uk

Run personally by the Chef/Proprietors, Mike & Jo Abraham

HOW TO FIND US

FROM THE NORTH

Travelling from the North on the M6, take EXIT 15 and join the A53. We are 3 miles West of Market Drayton. Just before the crossroads of the A53 & A41 (Ternhill Roundabout), turn left through the arched entrance to the back of the property.

FROM THE SOUTH

Travelling from the South on the M54, take EXIT 3 and join the A41. At the crossroads of the A41 & A53 (Ternhill roundabout) take the 3rd exit for Market Drayton, and then turn immediately right under the archway into the back of the property.

BY AIR

We are 54 miles/65 minutes drive from Manchester Airport & approximately 60 miles/75 minutes drive from Birmingham International Airport (to the south) or East Midlands Airport (to the East).

BY TRAIN

Telford Station is approximately 14 miles/20 minutes drive south on the A41.

Shrewsbury Station is approximately 17 miles/30 minutes drive west on the A53.

Should you require more detailed directions, we would be happy to send you a map specific to your journey.

NB. If using a SAT Nav. to locate us, we have a shared postcode with approx 10 properties.

The SAT Nav. will incorrectly direct you to the North/West side of the Ternhill Roundabout (Crossroads of A53 & A41). We are actually situated on the South/East side of that roundabout



"Garden Room"
~ lounge with log/coal fire & patio doors overlooking the fish pool

AND FINALLY.....

Whether it's an overnight stay on business or a few days visiting Shropshire, Cheshire & Staffordshire we will give you as much privacy or attention as you wish – we're old hands in the hospitality industry. We will endeavour to make your stay as comfortable & memorable as possible in the hope that you will pass the word & return again. It's our most effective form of advertising!